



PLAN THE
UNPLANNED

Bandaje Falls Trek **VIA BALLARAYANA DURGA FORT**





TABLE OF CONTENTS

- Overview
- Trek Details
- Brief Itinerary
- Inclusions & Exclusions
- Pickup Points
- Price & Booking
- Things To Carry
- Terms & Conditions

OVERVIEW

When water from the top of Bandaje Arbi will tip-toe to your feet and when your feet will find a way into the offbeat trails of Kudremukh mountain range to Ballalarayana Durga Fort, understand that you are doing something for your soul. From time immemorial, people have been going on treks in the Chikmagalur district. However, in truth, this is the one where the crowd has still not hit: Ballalarayana Durga Fort and Bandaje Arbi is the trek known for its untouched beauty and paradisiacal landscapes and for sure, it's calling you.

Located in the Charmadi ghat section of the Western Ghats in the Belthangady taluk of Dakshina Kannada district, the trek has the most serene and pristine landmarks like Rani Jhari Falls, Ballarayanadurga Fort and Bandaje Arbi.

On a two-day adventure, you will push your limits, trek on a stunning trail, go to fun-filled Kodige falls and visit Chennakeshava temple in the Belur in Hassan district. With all love, we invite you on a journey where you will feel alive and admire each bit of the trip. Check out the itinerary and join us on our next adventure.

Trip Highlights:

- Trek to the offbeat Ballalarayana Durga Fort and Bandaje Arbi.
- Take a dip and play in the pristine water of Kodige Falls.
- Visit the famous Chennakesava Temple in Belur in Hassan district.



TREK DETAILS



Duration: 2 days / 1 Nights



Max Altitude: 4950 ft.



Min Age: 10+ Years



Location: Sunkasale, Karnataka



Difficulty Level: Moderate



BRIEF ITINERARY

DAY 0

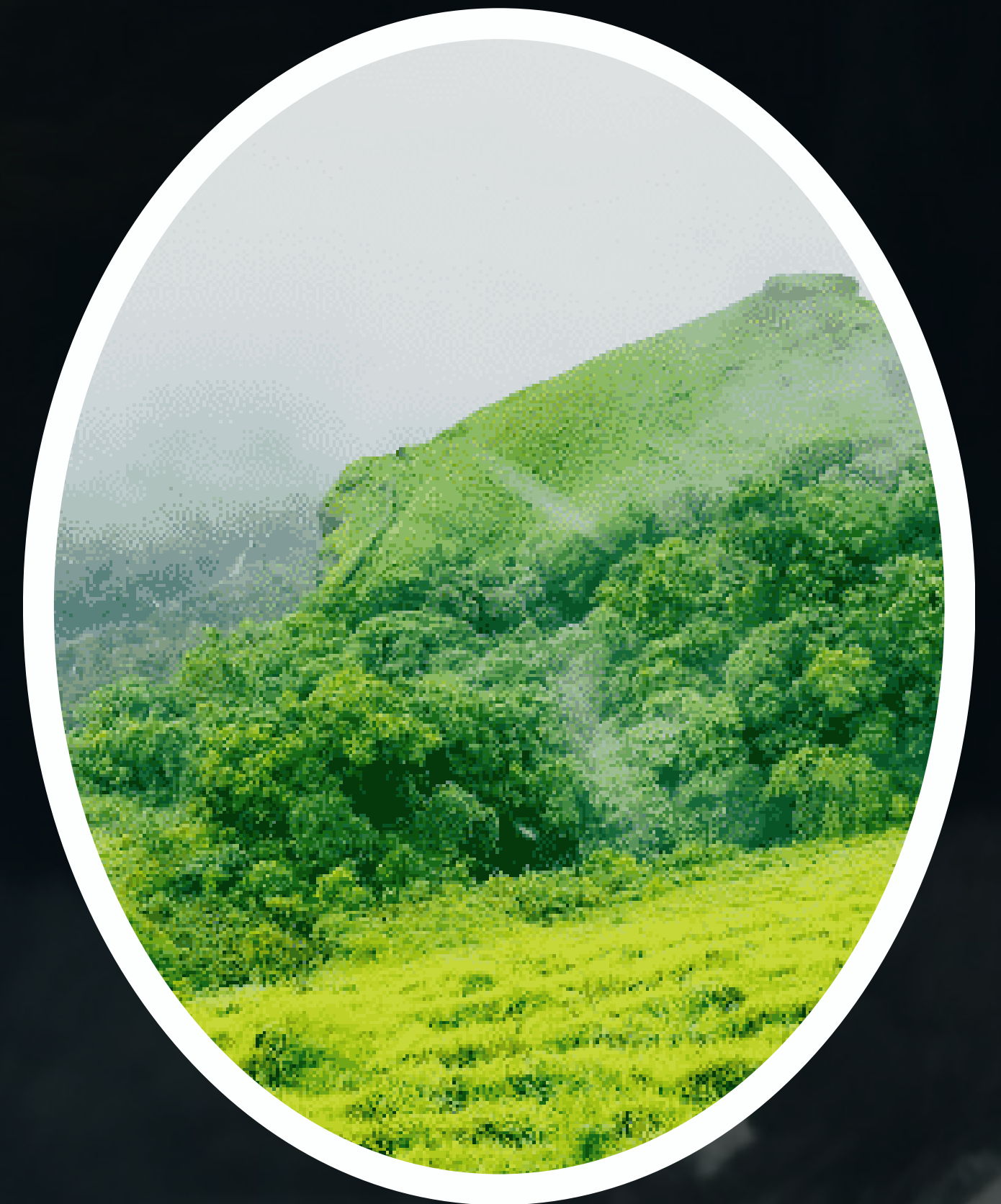
- Leave from Bangalore

DAY 1

- Start the day early, Have breakfast
- Drive down to the start point of Bandaje Falls trek
- Trek to Bandaje Falls
- Lunch en-route
- Trek to Ballarayanadurga Fort
- Trek back to the base
- Reach homestay by 6:00 PM
- Rest for a while (High tea and snacks)
- Bonfire and Dinner
- Retire for the night

DAY 2

- Wake up at around 7:00 AM (approx), freshen up, breakfast
- Visit Secret Falls (Approx 2-3 km of walk)
- Visit Chennakeshava Temple built in the era of the Hoysala Empire (Offbeat exploration by PTU)
- Reach Bangalore by 10:30 PM (approx)



INCLUSIONS

- ✓ Accommodation in Homestay/Tents on multiple sharing basis (separate for men & women)
- ✓ 2 Breakfast, 1 Lunch, 1 Dinner, High Tea and Snacks
- ✓ To and fro Transport from Bangalore (Non A/c pushback seat tempo traveller/ mini bus)
- ✓ Jeep Ride to Trek Base (Pickup and Drop)
- ✓ Karnataka Forest Department Entry Fees
- ✓ Local Guide & Outdoor Leader from Plan The Unplanned
- ✓ Experience that you gain

EXCLUSIONS

- ✗ Any meals not included above
- ✗ Any kind of personal expenses
- ✗ Any kind of insurance (health, medical, life accidental,etc)
- ✗ Anything not included above



Yeshwanthpur
Metro

KTM Mekhri Circle

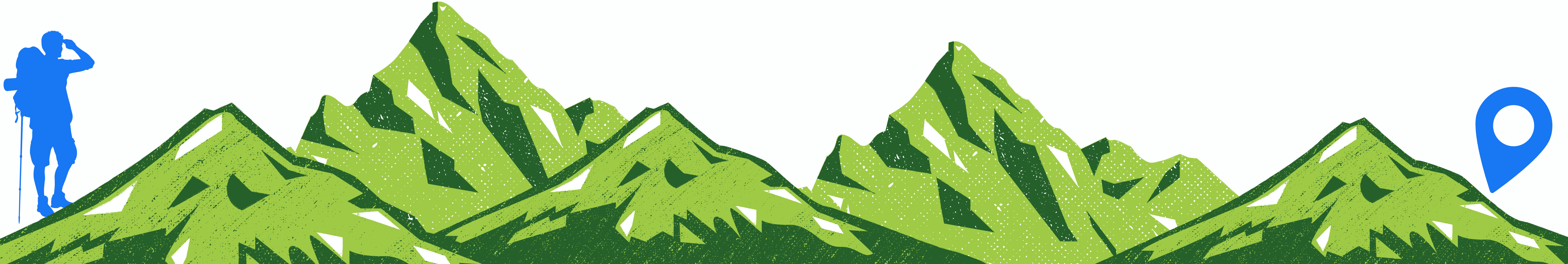
House of Licious,
Domlur

Cubbon Park Metro

New Udupi Grand,
Teacher's Colony HSR

PICKUP

POINTS



PRICE AND BOOKING

With Travel

INR 3,999 |- Per Person

With Travel

INR 2,899 |- Per Person

BOOK NOW



Bank Details

Name of the business :

**UNPLANNED JOURNEYS
PRIVATE LIMITED**

Branch IFSC Code :

ICIC0003135

Bank Account Number :

313505000192



Google Pay: **09482070194**

UPI: **unplannedjourneys@icici**



THINGS TO CARRY

- Soft Copy of your Aadhar/Voter ID (Mandatorily required for permits)
- Face Masks & Hand Sanitisers (Mandatory)
- Small backpack to carry your essentials during the trek
- Warm Layer
- Water bottles – 2 (1 liter each)
- Lunch Box & Spoon to carry your packed lunch
- Raincoat/Bag covers in case of rains
- A comfortable pair of shoes with good grip for trekking
- Flip-flops for lazing around the campsite
- Torch/Headlamp to be used at night
- Power Bank
- Portable chargers for your electronics
- Extra pair of clothes to change into once wet
- Polybags to pack your wet clothes
- Extra cash for meals not included in the itinerary



TERMS AND CONDITIONS

In the event that YOU cancel your trek, this is the cancellation policy we follow:

Intimation Period* Cancellation Fee**

7 days or more	10% of the total invoice value
Between 3-6 days	50% of the total invoice value
Between 0-2 days	100% of the total invoice value

- *Intimation Period means the number of days before the tour is scheduled to start
- **Cancellation Fee is the amount of money that will be deducted from the total billing amount before offering the refund.
- Refund/Cancellation requests are accepted only by email at info@plantheunplanned.com and not via call or Whatsapp.

NOTE :

- There will be no consideration given to cancellations on the day of departure or the day before due to work/family emergencies, health issues, etc., and no refund or transfer to alternative dates will be permitted for the same.
- You would be required to pay an additional fee of RS 1500 if you wanted to postpone your trek and cancel on the day of departure. This is only available for 3 months after the departure date of the actual trip.

- If you cancel the trek at any time (in addition to the scenario stated above), additional fees will be collected (depending on where you made your booking) as payment gateway/event listing fees.

The following is our cancellation policy in the unlikely event that we have to postpone your trek:

During and After the Trek: In the event of severe weather, taking the trekkers' safety into consideration, a day may be shortened or the trek may be abandoned entirely. There will never be a refund of any kind.

Prior to the trek: Make a plan in the event that a trek is canceled due to a natural disaster (such as a rainstorm, flood, landslide, earthquake, or unanticipated political disturbance, curfews, local riots, government orders, or directives from the forest department). A VOUCHER for the full value of your ticket will be issued by The Unplanned.

The payment gateway fees will be deducted from any refunds that are granted.

If we have to cancel your trek because there aren't enough reservations for that particular batch or we don't have enough participants, **PLAN THE UNPLANNED** will refund you 96% of the trek money (Payment Gateway charges shall be deducted)

