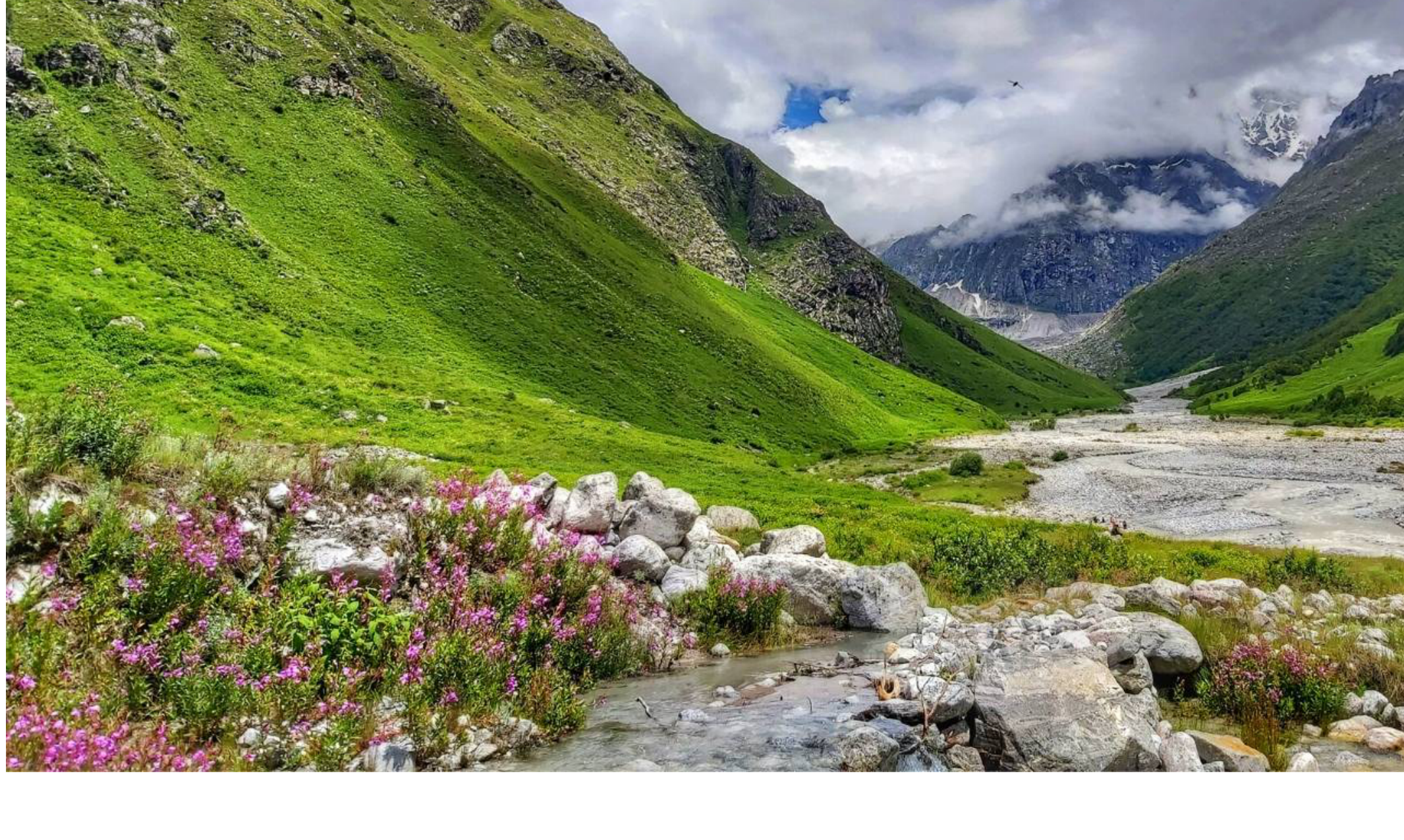




Valley of Flowers Trek



About This Experience

Valley of Flowers is a vibrant and splendid national park in the Himalayas. Nestled in Uttarakhand, this alluring place is famous for its charming meadows of alpine flowers. Endowed with a diverse range of endemic flora, it is picturesque in its beauty. This lush region is also home to some rare and endangered animal species. You may spot animals like Asiatic black deer, snow leopard, musk deer, red fox, brown bear, and blue sheep. High in the lofty Himalayas of the Garhwal region sprawls this enchanting valley. Legends believe it to be the place from where Hanuman had collected the Sanjeevani Booti for curing Lakshmana. This place has floral pastures, running streams and a beautiful backdrop of the mountains.

Highlights

Day 1: Travel from Rishikesh to Joshimath/Pipalkoti, a distance of 253 kilometers that would take approximately 8 hours to cover by car.

Day 2: Commence with a 1-hour drive covering 22 kilometers from Joshimath/Pipalkoti to Pulna, followed by a 9-kilometer, 5-hour trek to reach Ghangaria.

Day 3: Embark on a 10-kilometer, 7-hour trek from Ghangaria to the Valley of Flowers, followed by the return journey to Ghangaria.

Day 4: Proceed with a 14-kilometer, 9-hour trek from Ghangaria to Hemkund Sahib, and return to Ghangaria.

Day 5: Trek 9 kilometers for 5 hours from Ghangaria to Pulna, followed by a 22-kilometer, 1-hour drive to Joshimath/Pipalkoti.

Day 6: Return to Rishikesh from Joshimath/Pipalkoti via an 8-hour, 253-kilometer car journey.



Start Point :

<https://goo.gl/maps/NFiWcEf3cJM4Qacw5>



Min. Age:

12 years



Difficulty Level :

Moderate



Max. Altitude:

15200 feet

INCLUSIONS AND EXCLUSIONS

INCLUSIONS

Accommodation: Two nights of accommodation in a hotel in Joshimath and three nights in a hotel in Ghangaria, on a triple/quad sharing basis.

Transportation: A surface transfer service will be provided for the entire journey from Rishikesh to Rishikesh.

Meals: The package includes vegetarian meals, starting from dinner on Day 1 to breakfast on Day 6.

Snacks: Morning and evening tea and coffee will be served with light snacks.

Trek Leader: The trek will be led by a qualified and experienced trek leader, along with a support staff.

Permits: All the necessary permits and fees required for the trek are included in the package.

Safety Equipment: A basic first aid kit, along with an oximeter and an oxygen cylinder, will be provided for ensuring safety during the trek.

EXCLUSIONS

- Air fare/Train ticket
- Accommodation at Rishikesh
- Enroute meal (Rishikesh - Govindghat - Rishikesh)
- Backpack offloading during the tre
- Any charges for carrying still/video cameras etc
- Soft drinks, bottled water, beverages, etc
- Personal expenses like tips, telephone calls, laundry, etc
- Trekking equipment like trekking bag, shoe, trekking pole etc
- Any meals/services not mentioned above
- Any costs arising out of unforeseen circumstances like landslides, road blocks, bad weather, health condition etc
- Travel insurance

BOOK NOW

Coupons Code

VOF300

₹ 300 /- OFF

Pricing

WITH TRAVEL

₹ 9000 /- PerPerson

GST

5.00%

Book Now

Key Contact Person : (8147086083)



Helpdesk : +91 7760710005



WhatsApp Us : +91 7760710005

ADDITIONAL INFORMATION

How is the Trip /Trek Organised?

For the proper organization of Backpacking Trips and Himalayan treks, **Plan the Unplanned team is associated with a local experienced team that's registered with ATOAI (Adventure Tour Operators Association of India)**

Moreover, we have been working with them for 10 years. Their highly skilled staff with 20+ years of experience, professional local guides and BMC certified trek leaders are the reasons for our continuing partnership with them. The team shall manage all operations, medical and mechanical backup starting from the base location.

Only when we have over 8 bookings from Bangalore, do we send our leaders from Bangalore.

Note: To properly utilize resources, a batch from PTU is clubbed with trekkers who originally book with the local team. This is how all trekking organizations manage their treks. An exclusive PTU batch is only formed when we have a majority of bookings (over 8 and above) from PTU

CANCELLATION POLICY

Himalayan/ Backpacking Trip Refund/Cancellation Policy

Intimation Period* Cancellation Fee**

30 days or more 10% of the total invoice value

Between 15-29days 50% of the total invoice value

Between 0-14 days 90% of the total invoice value

- *Intimation Period means the number of days before the tour is scheduled to start
- **Cancellation Fee is the amount of money that will be deducted from the total billing amount before offering a refund.

NOTE:

- Last-minute cancellations due to work, health issues, etc., any kind of emergencies will not be entertained and no refund or transfer shall be allowed for the same.
- You can transfer your bookings to anyone who is willing to join the event to avoid loss of money!
- The tickets once booked cannot be moved to any other dates.

In the rare event that we cancel your trek, this is the cancellation policy we follow:

In case we cancel a trek because of natural calamities (thunderstorms, floods, landslides, earthquakes) or unexpected political unrest, curfews, local riots, government orders, forest department orders, Plan The Unplanned shall issue a VOUCHER for the full amount of your ticket.

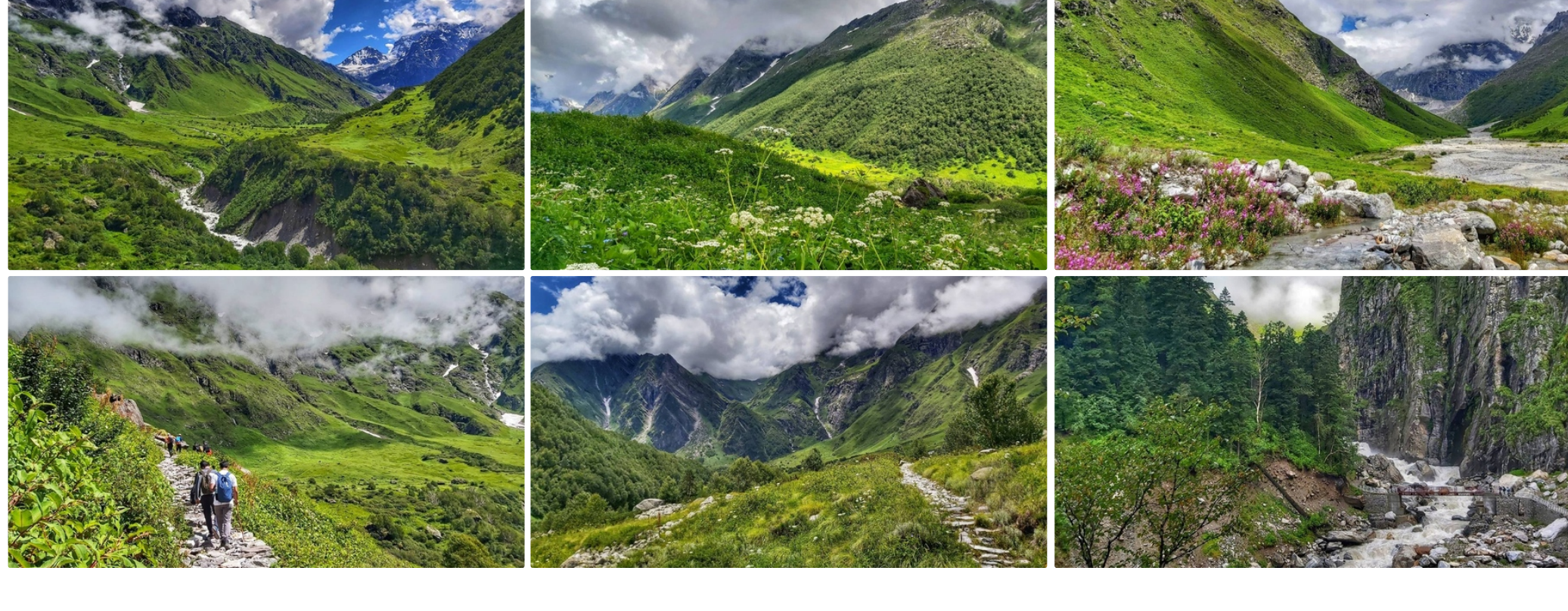
Note: The Voucher has a validity of 1 year and it can be redeemed at any point in time.

A prior intimation as regards which trek you wish to join can be communicated to us over mail or phone

In a case where we cancel your trek, due to a limited number of bookings for a particular batch or we do not have the minimum number of required people:

PLAN THE UNPLANNED shall offer a 100% refund of the trek fee (No transactional/internet handling charges shall be deducted)

GALLERY



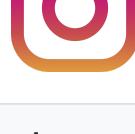
Helpdesk : +91 7760710005



Goto Website



WhatsApp Us : +91 7760710005



Goto Instagram



Goto Facebook



info@plantheunplanned.com